



INDOFINE Chemical Company, Inc.

121 Stryker Lane, Bldg. 30, Suite 1 • Hillsborough, NJ 08844 • U.S.A.

Phone: (908) 359-6778 • FAX: (908) 359-1179

website: www.indofinechemical.com

e-mail: chemical@indofinechemical.com

CERTIFICATE OF ANALYSIS

Catalog Number: 06-1790

Product Name: **BRASSINOLIDE**

CAS Number: [72962-43-7]

Lot Number: 2007445

Chemical Formula: C₂₈H₄₈O₆

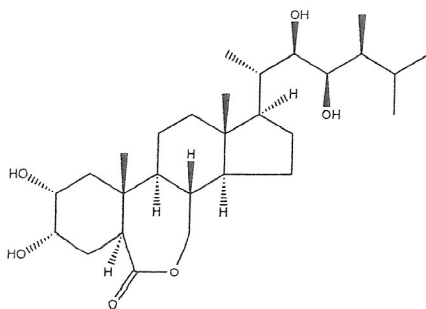
Molecular Weight: 480.69

Appearance: Off-white powder

Loss on Drying: 1.6%

Storage: Store at 2-8°C. Protect from light.

Purity(HPLC): 97.36%



Prepared by:
Ramesh Mandadi
Ramesh Mandadi
Director of Operations

Reviewed and approved by:
Sujata Moton
S. Moton
VP



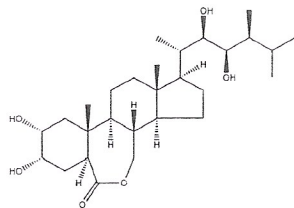
INDOFINE Chemical Company, Inc.

121 Stryker Lane, Bldg. 30, Suite 1 • Hillsborough, NJ 08844 • U.S.A.

Phone: (908) 359-6778 • FAX: (908) 359-1179

website: www.indofinechemical.com

e-mail: chemical@indofinechemical.com



HPLC ANALYSIS

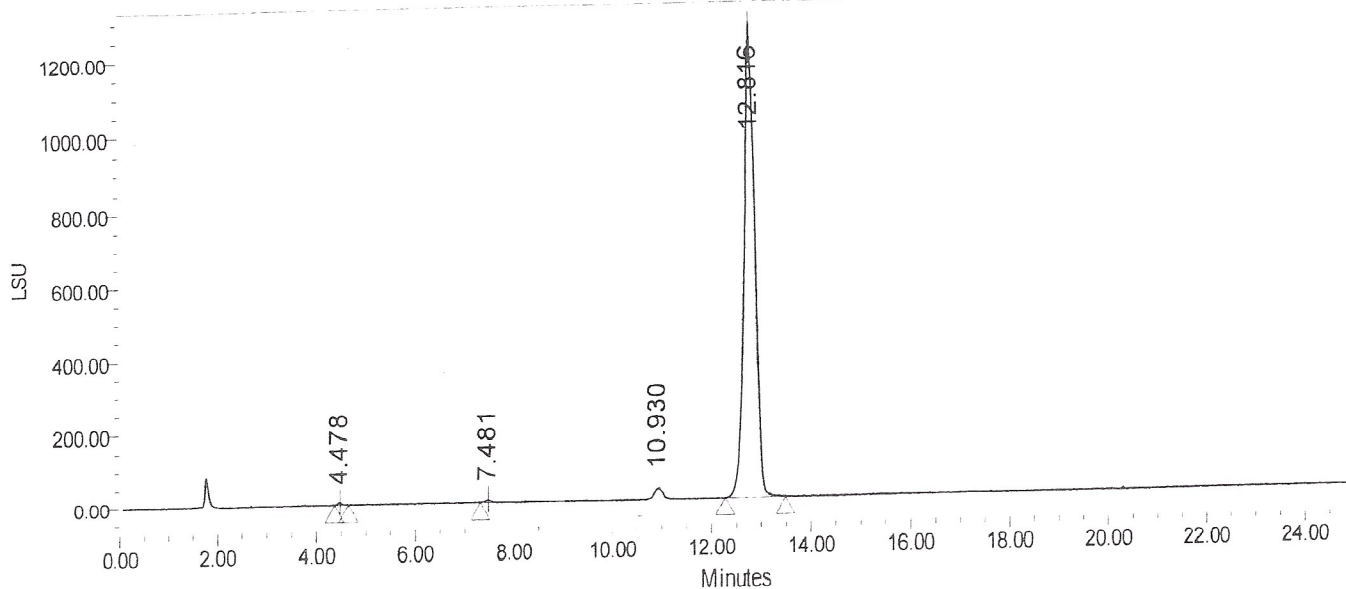
Catalog No.: 06-1790
Product Name: Brassinolide
Lot No.: 2007445

SAMPLE INFORMATION

Sample Name: Brassinolide
Sample Type: Unknown
Vial: 80
Injection #: 1
Injection Volume: 10.00 ul
Run Time: 25.0 Minutes

Acquired By: prf01
Sample Set Name
Acq. Method Set: Brassinolide
Processing Method: sample
Channel Name: ELSD Signal
Proc. Chnl. Descr.: ELSD Signal

Auto-Scaled Chromatogram



Peak Results

Name	RT	Area	% Area	Height (µV)	USP Plate Count	USP Resolution
1	4.478	52363	0.27	7650		
2	7.481	79384	0.41	8746		
3	10.930	379814	1.96	30778		
4	12.816	18899615	97.36	1266405		